

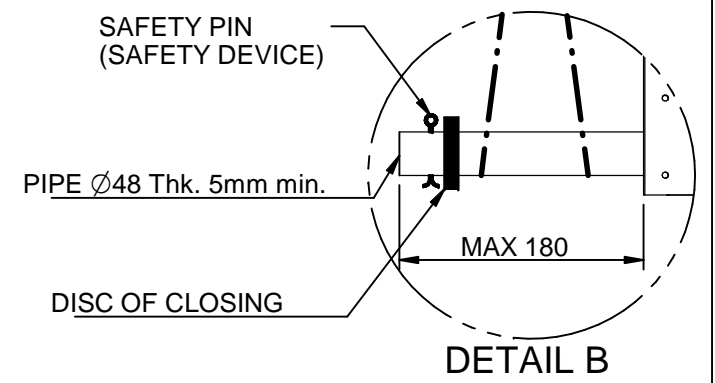
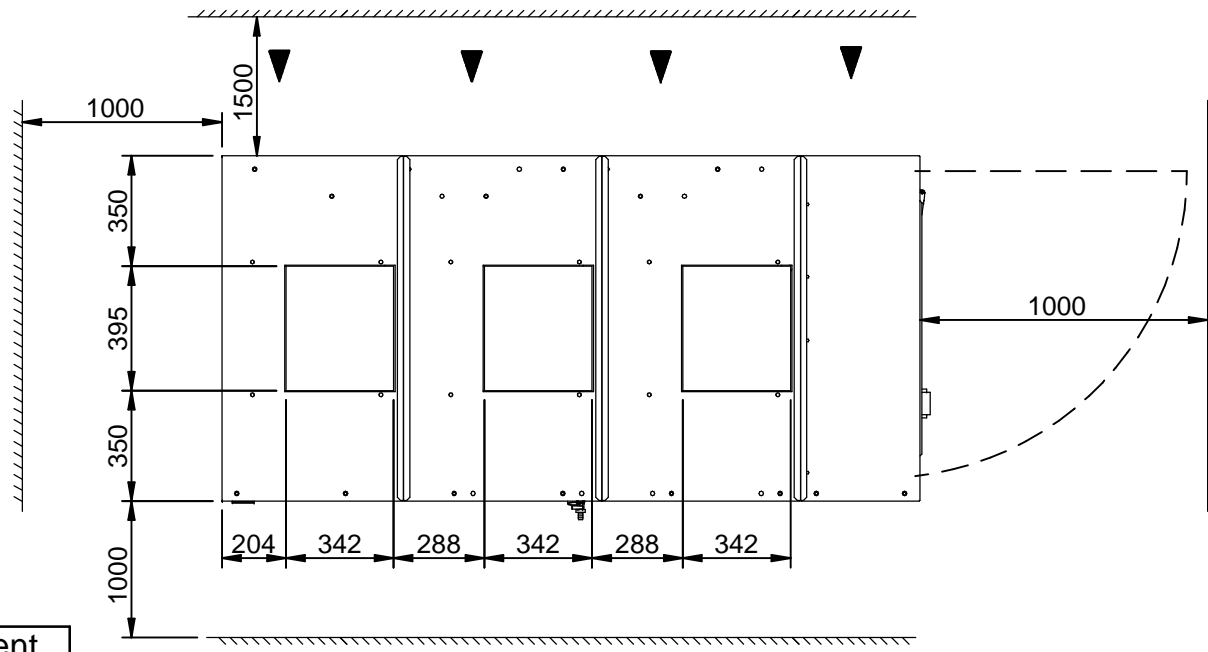
(\*) MAKE STRAIGHT PIPING FOR AIR FOR EACH FAN WITH SAME DIMENSION OF FAN DELIVERY AND WITH A LENGTH BIGGER THAN 1,2 METERS

**LEGEND**

HPG	High pressure gauge
LPG	Low pressure gauge
MW	Water pressure gauge
RM	Manual water filling cap
SFA	Manual air vent
VSC	Water drain valve
ATV	Rubber type antivibrant mounting ( Opt )

**LIFTING AND CARRIAGE PRECAUTIONS**

- Check the weight on the CE label to select appropriate lift equipment .
- Before lifting the unit make sure that the external panel is firmly fixed in place.
- To use only lifting points provided.
- The chains or slings must be of equal length.
- To use a spread-bar to avoid damage to the unit.
- The movement must be performed with caution and avoid abrupt movements.
- Never move the unit on rollers.



MOD.	EMPTY WEIGHT	OPERATING WEIGHT
CSE.061	770 kg	1190 kg
CSE.075	800 kg	1220 kg

Scala-Scale	Data-Date	Dis.to-Drawn	N°Pezzi	<b>HITEMA®</b>
	29/05/15	M. M.		
Peso-Weight Kg.	Materiali-Materials			
Denominazione-Denomination				DIS.-DRAW N.
WATER CHILLERS mod. CSE.061÷075				DIM-CSE-061ST01
Particolare-Detail				Rev.
Overall dimension - Lift Instruction				01-M.M.-17/01/17
REFRIGERANT R410a				PROGRAM.N.