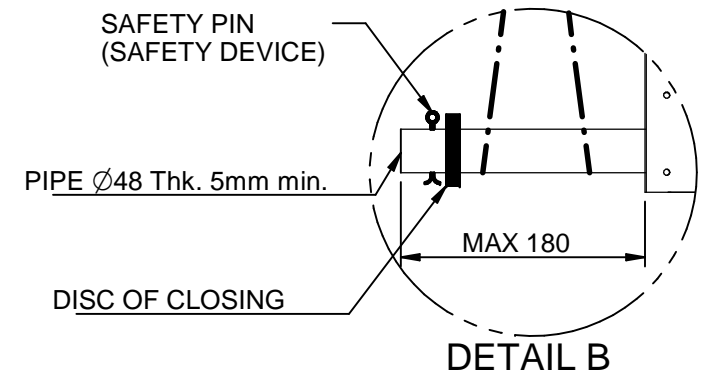
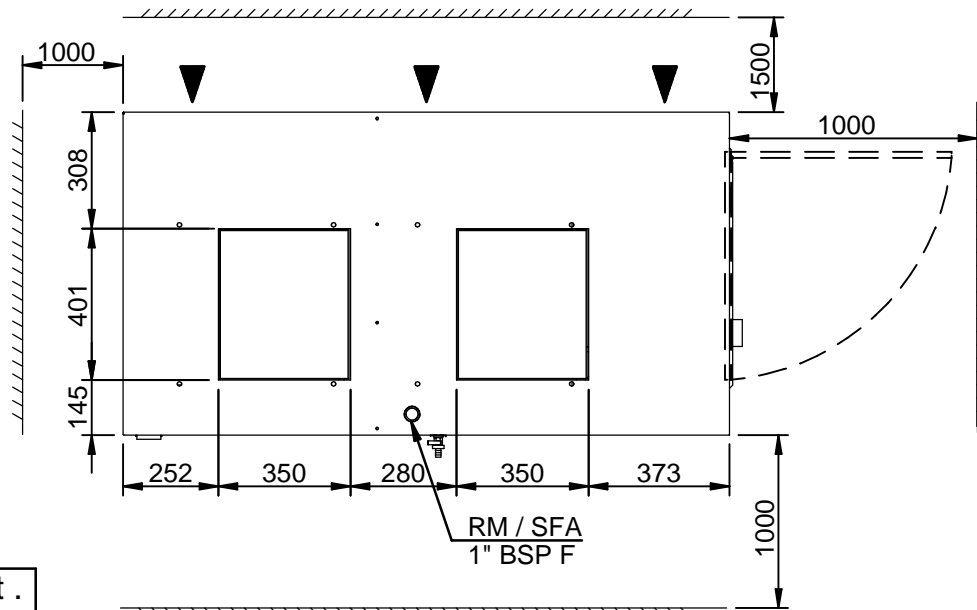


### LEGEND

HPG	High pressure gauge ( Opt )
LPG	Low pressure gauge
MW	Water pressure gauge
RM	Manual water filling cap
SFA	Manual air vent
VSC	Water drain valve
ATV	Rubber type antivibrant mounting ( Opt )

### LIFTING AND CARRIAGE PRECAUTIONS

- Check the weight on the CE label to select appropriate lift equipment .
- Before lifting the unit make sure that the external panel is firmly fixed in place.
- To use only lifting points provided.
- The chains or slings must be of equal length.
- To use a spread-bar to avoid damage to the unit.
- The movement must be performed with caution and avoid abrupt movements.
- Never move the unit on rollers.



MOD.	EMPTY WEIGHT	OPERATING WEIGHT
CSE.030	445 kg	720 kg
CSE.038	465 kg	740 kg
CSE.045	495 kg	770 kg

Scala-Scale	Data-Date	Dis.to-Drawn	N°Pezzi
	07/04/15	M. M.	
Peso-Weight Kg.	Materiali-Materials		
Denominazione-Denomination			
WATER CHILLERS mod. CSE.030÷045			
Particolare-Detail			
Overall dimension - Lift Instruction			
REFRIGERANT R410a			

**HITEMA®**

DIS.-DRAW N.	DIM-CSE-030ST01
Rev.	02-M.M.-17/01/17
PROGRAM.N.	