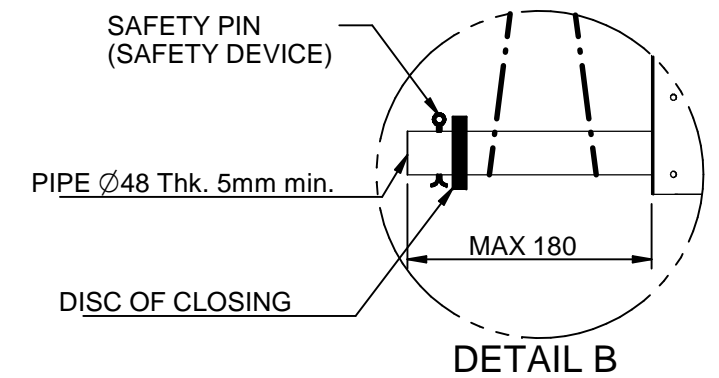
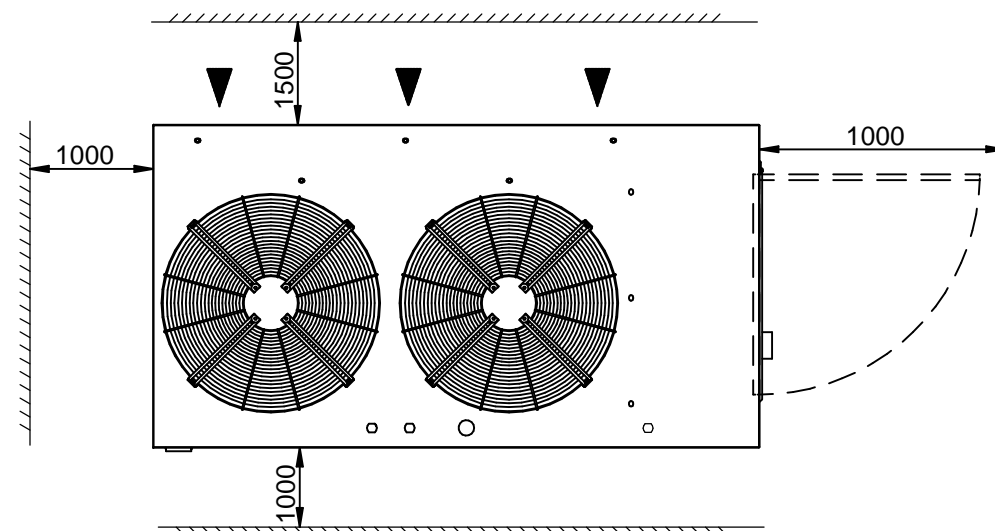


LEGEND

HPG	High pressure gauge (Opt)
LPG	Low pressure gauge (Opt)
ATV	Rubber type antivibrant mounting (Opt)

LIFTING AND CARRIAGE PRECAUTIONS

- Check the weight on the CE label to select appropriate lift equipment .
- Before lifting the unit make sure that the external panel is firmly fixed in place.
- To use only lifting points provided.
- The chains or slings must be of equal length.
- To use a spread-bar to avoid damage to the unit.
- The movement must be performed with caution and avoid abrupt movements.
- Never move the unit on rollers.



MOD.	EMPTY WEIGHT	OPERATING WEIGHT
CFT.030	275 kg	280 kg
CFT.038	280 kg	285 kg
CFT.045	295 kg	300 kg
CFT.055	375 kg	380 kg

Scala-Scale	Data-Date	Dis.to-Drawn	N°Pezzi
	27/03/15	M. M.	01
Peso-Weight Kg.	Materiali-Materials		
Denominazione-Denomination			
WATER CHILLERS mod. CFT.030÷055			
Particolare-Detail			
Overall dimension - Lift Instruction			
REFRIGERANT R410a			

HITEMA®

DIS.-DRAW N.	DIM-CFT-030ST01
Revisione	02 - M.M. - 03/08/16
PROGRAM.N.	